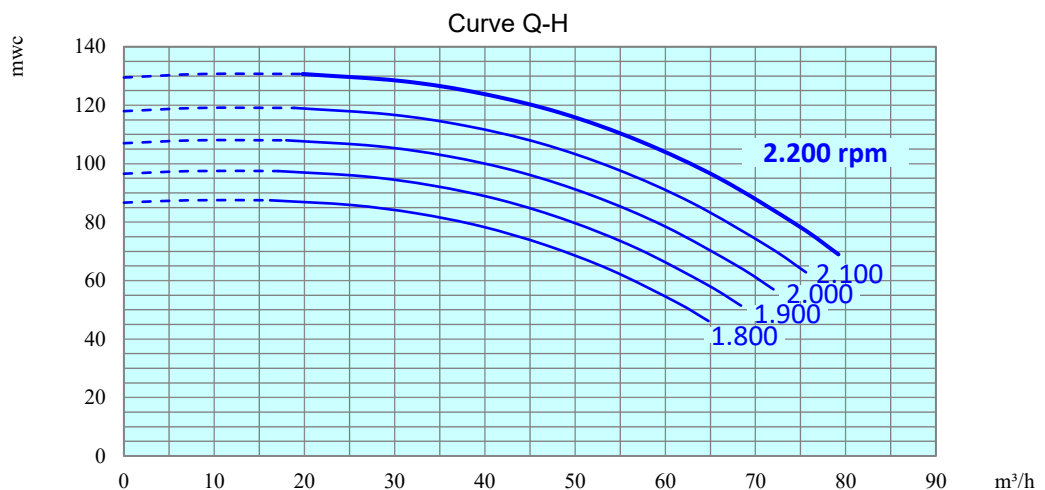
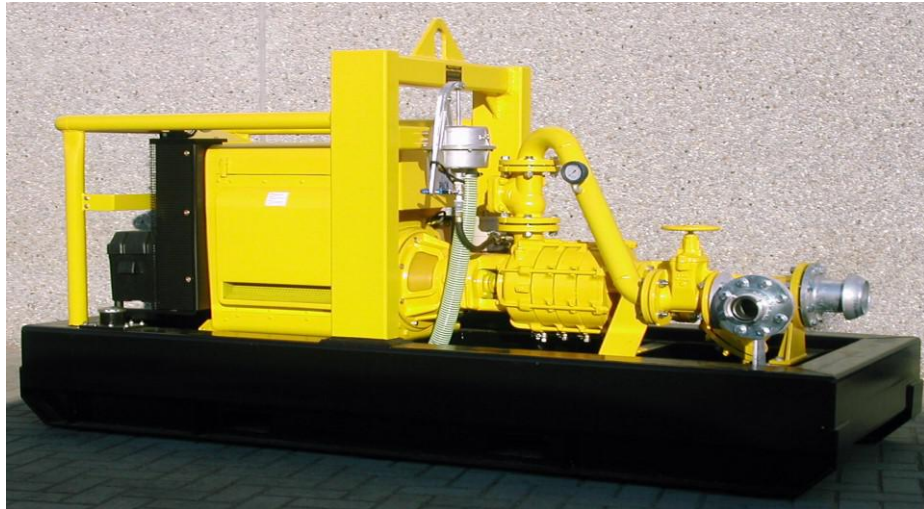


8060/3L41C

Diesel driven pump 4", high pressure



Type	: 8060/3L41C
Applications	: fluidization, fire extinguishing-like applications, clean or slightly polluted water, ...
Engine	: Hatz 3 cilinder diesel engine, aircooled, sound attenuated, type 3L41C
Power output	: 34 kW at 2.200 rpm
Free impeller passage	: 1,5 mm (prefilter)
Starting system	: 12 V electrical start
Weight	: 1.500 kg (full tank)
Tankage	: 210 liters
Consumption	: 8 liters / hour at maximum capacity
Dimensions	: 2.570 x 1.050 x 1.500 mm
Coupling	: suction : Perrot quick couplings 4" male discharge : DIN-flange DN80 PN16
Characteristics	: not self priming (hand priming unit mounted) prefilter non return valve, manometer and gate valve
Equipment	: adjustable speed central lifting eye, forklift pockets